

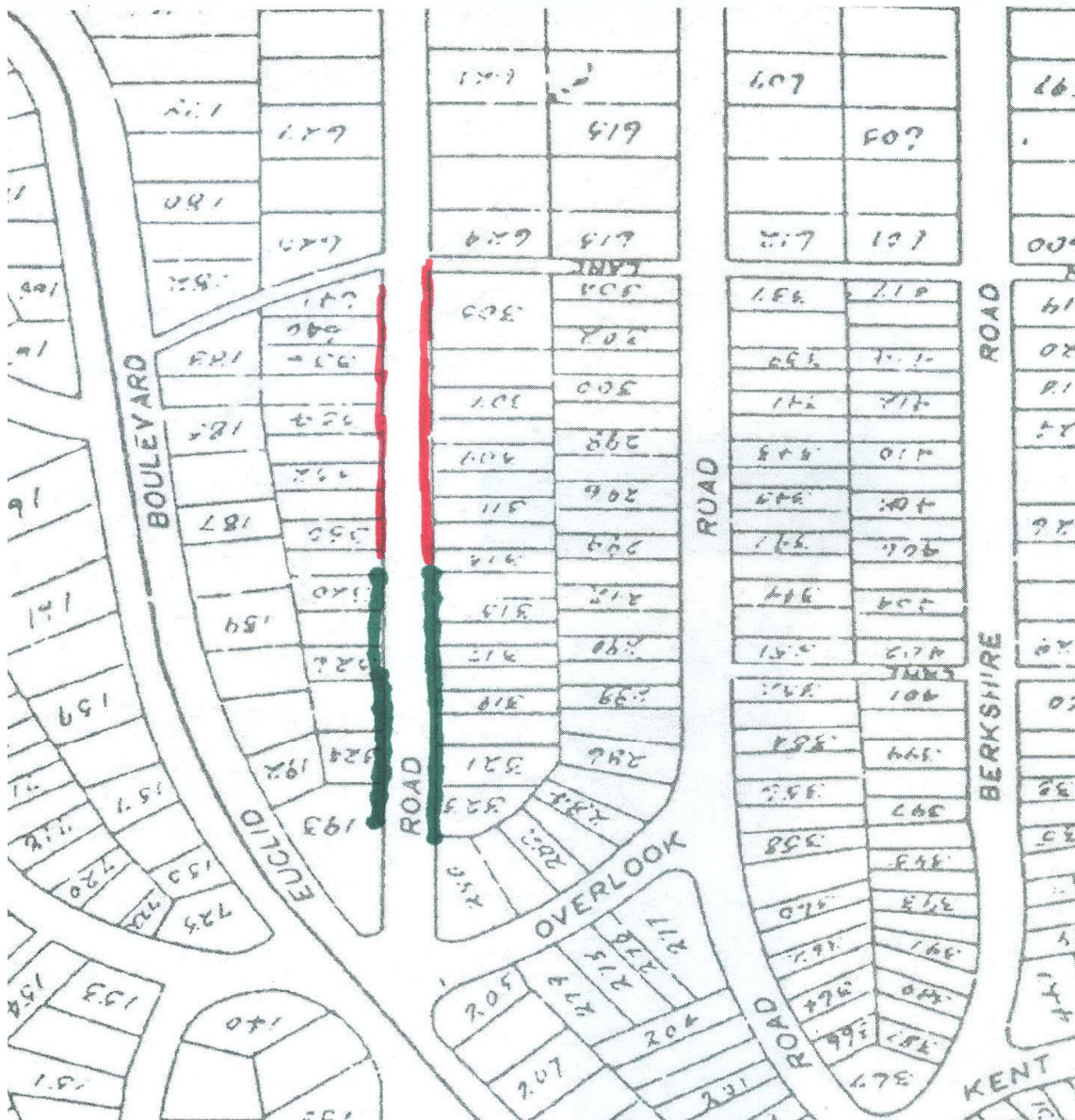
Cleveland Heights Cleveland Plain Dealer Route Maps, mid-1960s

LIGHT BLUE = John Bellamy's Last Paper Route
ORANGE = Christopher Bellamy's Last Paper Route



These maps are taken from the 1903 *Stranahan Map of Cuyahoga County Outside of Cleveland*; the one above it contains several misleading details features; Carleton Road, which is part of the City of Cleveland, is not shown and Kenilworth Road running past the traffic circle at Derbyshire is shown as extending all the way to Overlook (bisecting the old William Lowe Rice estate and including what is now the entrance road to Herrick Mews).

GREEN = John Bellamy's First Paper Route
RED = Stephen Bellamy's Last Paper Route



Although seemingly short, these two Euclid Heights Blvd. paper routes were mostly composed of apartment buildings.